

ALIGNMENT RELIABILITY CENTER 4.0

Installation Instructions

ALIGNMENT RELIABILITY CENTER 4.0

Installation instructions

Here you can find all information required for successful program installation.

Fluke Deutschland GmbH
Freisinger Str. 34
85737 Ismaning, Deutschland
Telephone +49 89 99616-0
Internet www.pruftechnik.com

Edition 10.2025

Order number DOC 17.100.en

Software version 3.1.0

System requirements

	Windows 10, Windows 11
Operating system	Not supported are: Windows 7, Windows 8, Windows 8 RT and Windows 8.1 RT
Screen resolution	1280 x 1024
CPU	Intel or AMD (x86 or x86-64)
RAM	Minimum 1 GB
Free disk space	Minimum 500 MB
Ports	USB, Bluetooth or Wifi, depending on the device
Installation	Internet

Concept and installation

Concept

The software is modular. The "Shaft Alignment" application is currently implemented. Further applications will be added later.

ARC 4.0 is available as free version. The data exchange between ARC 4.0 and PRÜFTECHNIK measurement devices and the Cloud is subject to a charge. To use the full functional scope, the device communication with ARC 4.0 must be licensed.

A license for the communication between measurement device and ARC 4.0 can be ordered from Fluke Deutschland GmbH.

ARC 4.0 - installing

ARC 4.0 is installed using the ARC 4.0 USB stick.

1. Insert the ARC 4.0 USB stick into your USB drive.
2. Click on the *.exe file.
3. Select a language for the installation.

The installation wizard starts automatically. Follow the instructions of the installation program closely.

4. Activate the "OK" and "Next" buttons.
5. Activate the "Installation" button.
6. Activate the "Finish" button.

ARC 4.0 - starting

Click on the ARC 4.0 icon on your desktop.

Saving and undoing changes

Use the "Ctrl" + "S" keyboard shortcut to save the entries. You can undo changes using the "Ctrl" + "Z" keyboard shortcut.

ARC 4.0 - exiting

1. Activate the ARC 4.0 icon in the left corner of the menu bar.
2. Select the "Exit" menu item.



Licensing device communication

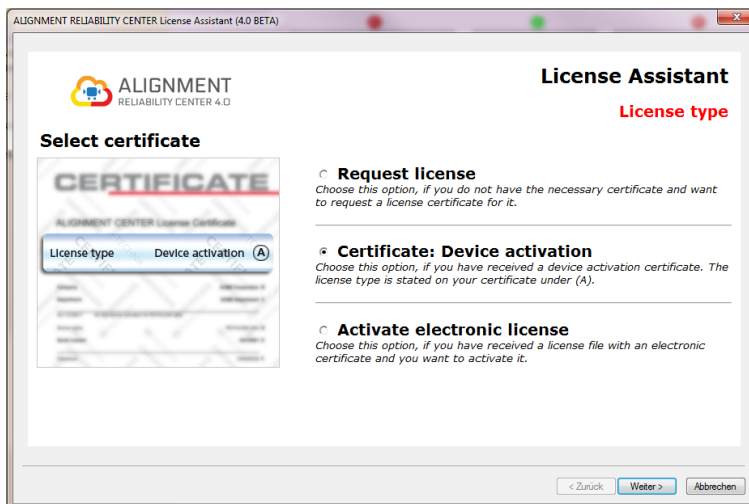
To register your Fluke Deutschland GmbH device and thus enable communication with ARC 4.0, you require a valid license certificate.

Please contact your local Fluke Deutschland GmbH contact person. Have the serial number of your measuring device available for registration. You can find the serial number on the type plate on the underside of the device. You will receive the license certificate by e-mail.

You may receive an electronic license file in the *.ACRLicense format. Please save it on your PC.

Registering PRÜFTECHNIK measuring devices

1. Activate the ARC 4.0 icon in the left corner of the menu bar.
2. Select the "Registration..." menu item. The "License Assistant" window opens.



3. Select "Certificate: Device activation" (or possibly "Activate electronic license")
4. Activate the "Next" button.
5. Enter the name of your company and your department (see license certificate, line B and C).

6. Activate the "Next" button.
7. Select your device (see license certificate, line D).
8. Activate the "Next" button.
9. Enter the serial number of the device (see license certificate, line E and/or type plate).
10. Activate the "Next" button. The checksum in line F indicates, whether your previous entries were correct.
11. Enter the license code (see license certificate, line G).
12. Activate the "Next" button and complete the registration.

Note: With the registration of the touch device, a server address is automatically enabled in the Cloud as well as 100 MB memory.

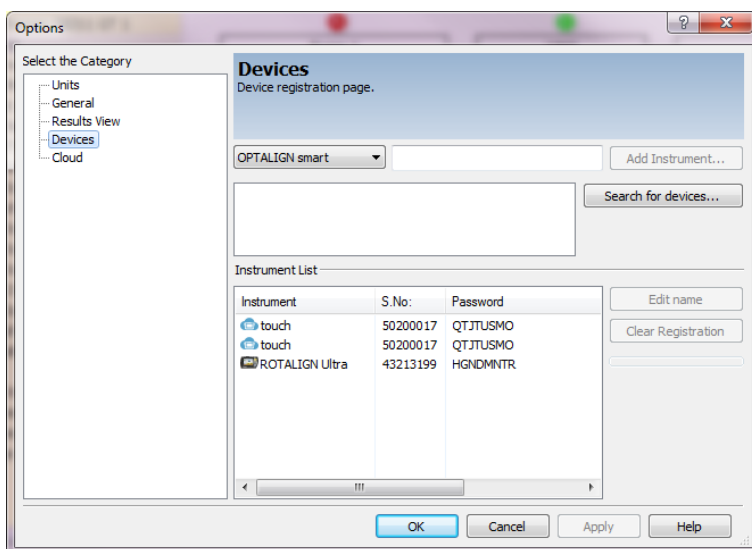
Managing device registration

1. Activate the ARC 4.0 icon in the left corner of the menu bar.
2. Select the "Options..." menu item.



The "Options" window opens.

3. Select the "Devices" menu item.



All registered devices appear in the device list. Here, a device name can be assigned. The registration can be deleted as well.